

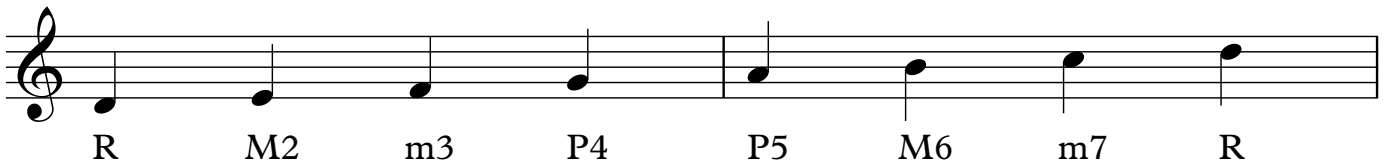
Modes of the Major Scale

Within the C Major Scale

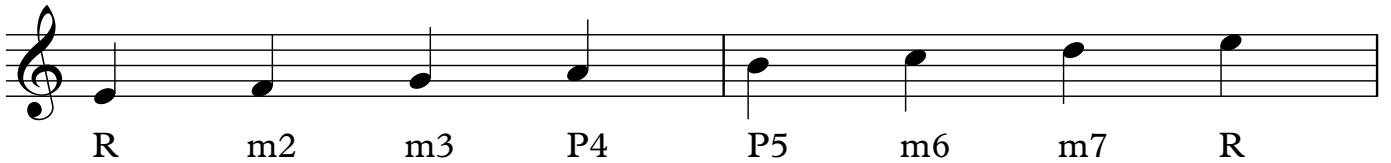
C Ionian - 1st mode of the C major Scale



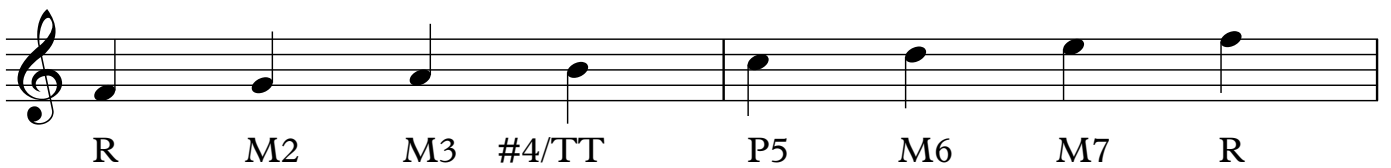
D Dorian - 2nd mode of the C major Scale - ii chord in C



E Phrygian - 3rd mode of the C major Scale - Em7 - iii in C



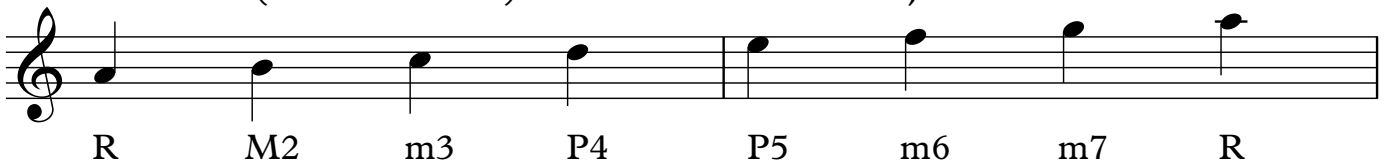
F Lydian - 4th mode of the C major Scale - Fmaj7 = F, A, C, E + B = #11 or #4



G Mixolydian - 5th mode of the C major Scale - is used over G7 = G, B, D, F



A Aeolian (Natural Minor) - 6th mode of the C major Scale - is used over Am7



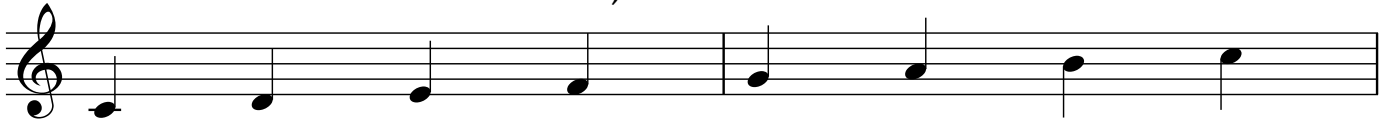
B Locrian - 7th mode of the C major Scale - is used over Bm7b5 = B, D, F, A



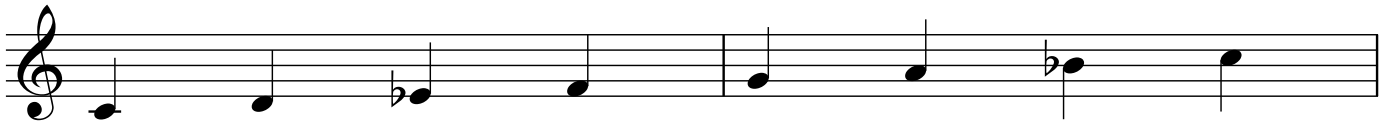
Modes of the Major Scale

Parallel Approach (same root)

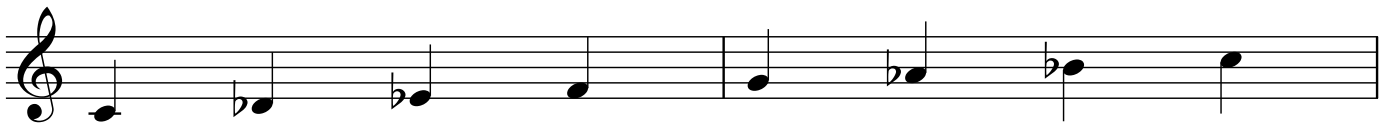
C Ionian - 1st mode of the C major Scale



C Dorian - 2nd mode of the Bb major Scale



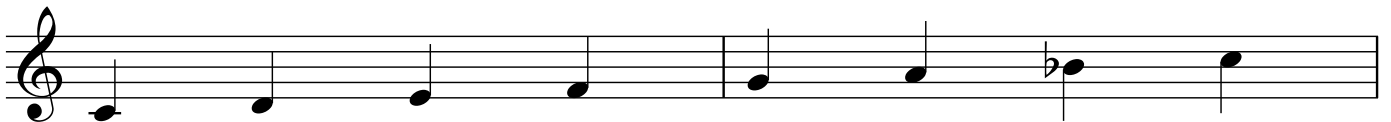
C Phrygian - 3rd mode of the Ab major Scale



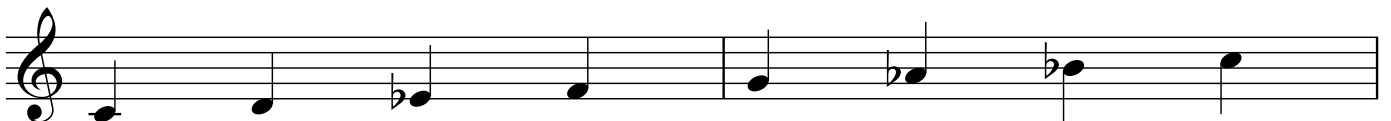
C Lydian - 4th mode of the G major Scale



C Mixolydian - 5th mode of the F major Scale



C Aeolian (Natural Minor) - 6th mode of the Eb major Scale



C Locrian - 7th mode of the Db major Scale

